



How Wellthy can help

Whether it's to care for yourself, your spouse, your children, your parents, or a member of your chosen family, Wellthy is here to help. We consider all of the variables of care including medical, financial, in-home, housing, legal, and social-emotional needs.

Create an account to get hands-on support from our team of care experts, or simply start out by using the many tools within the online Care Dashboard that meet you wherever you are in your caregiving journey.

Wellthy can help with:



Aging

For families with aging members dealing with all kinds of life changes.



Health Conditions

For those managing a tough diagnosis or chronic condition.



Mental Health

For those struggling with depression, anxiety, and other mental or behavioral health concerns.



Veteran Support

For our heroes and their families to get the care they deserve.



Financial Support

For assistance with bills, insurance, benefits, and other programs.



Neurodiversity and Disabilities

For special families with unique and intersectional needs.



Childcare and Teen Support

For parents and caregivers who are raising children and teenagers.

You and your family have sponsored access to Wellthy!

Getting started is simple.



1

Scan the QR code or visit the link below and click 'GET STARTED'

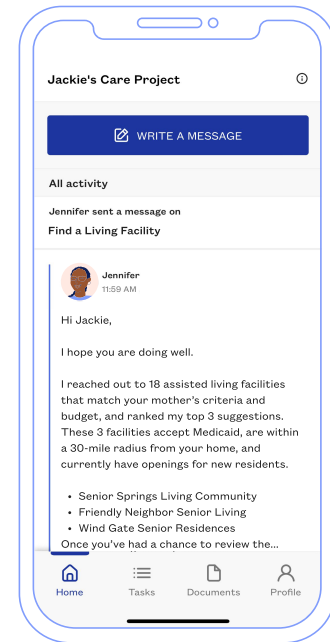
2

Create your account and verify eligibility with your work email

3

Tell us about your care situation to get matched with a Care Coordinator

Benefits of care support from Wellthy



- ✓ **A skilled care professional dedicated to you**
Your Care Coordinator will get to know your care story beginning to end. They'll identify priorities, design a personalized plan, tackle administrative tasks, and act as an advocate on your behalf.
- ✓ **Guidance from experts who know the care industry**
Wellthy Care Coordinators are backed by specialized teams who are experts across every variable of care — from insurance to in-home care to mental health and beyond.
- ✓ **Family meetings, simplified**
Keep siblings, relatives, neighbors, and anyone involved in care situation in the loop with streamlined communication — one email thread, one central channel, one voice of reason.
- ✓ **Help with immediate needs, or support for the long run**
Create your account and open a Care Project to begin getting dedicated help now, or start by using the digital tools within the Care Dashboard so everything is set up for when you need it.
- ✓ **Everything you need, all in one place**
The Care Dashboard keeps your information safe and accessible. Maintain all of your contacts, keep up with doctor appointments, track tasks, and store important documents.
- ✓ **A community of caregivers who can relate to what you're going through**
Wellthy Community is a peer-to-peer space for family caregivers to find support, share experiences, and exchange knowledge across a range of care topics.

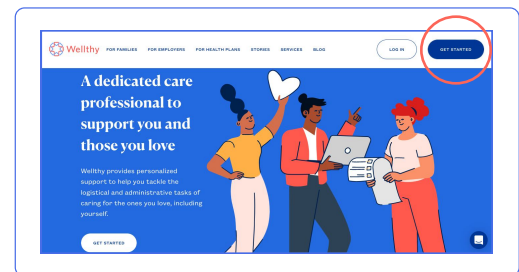
How to get started with Wellthy

Follow the steps below to create your account, connect with a Care Coordinator, or begin using the self-service tools within the Care Dashboard.

Whether you're planning for caregiving responsibilities, navigating the aftermath of a sudden event or new diagnosis, managing an ongoing condition, or simply want to connect with others who are caring, Wellthy's suite of offerings meet you wherever you are in your caregiving journey.

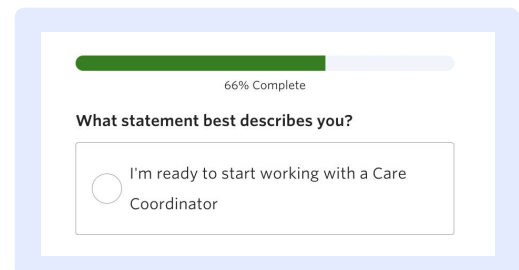
1 Create an account

Visit join.wellthy.com/ab and click 'GET STARTED'. Enter your name, work email, and password. You'll need access to your email to verify your account.



2 Confirm your eligibility

To verify you have sponsored access to Wellthy's services as a covered benefit, you will need to confirm your eligibility with your employee email.



3 Start a Care Project or explore Wellthy Community

We'll ask for a bit of information on who you're caring for so we can match you with the best-fit expert on our team. As a final step, let us know if you're ready to start working with a Care Coordinator, or simply choose your Wellthy Community display name to connect with other family caregivers.



Member Support is available to answer questions about the sign-up process

Reach us by calling (877) 588-3917 or chat with us live by visiting join.wellthy.com/ab